



1.0 hours of CE including 1.0 RX
CONTINUOUS GLUCOSE MONITORING: A COMPREHENSIVE REVIEW FOR THE NURSE PRACTITIONER

START DATE: 3/13/20 **END DATE:** 3/30/21

TARGET AUDIENCE: This activity was intended for nurse practitioners working in primary care practice; however, NP students and NPs in other specialties participated.

REGISTRANTS: 4,059 **CERTIFICATES AWARDED:** 2,347

ACTIVITY DESCRIPTION: NPs are well positioned to provide care to patients with diabetes, both type 1 and type 2, in the primary care setting. In appropriate patients, the use of CGM could enhance that care, but the benefits of such use and the most efficacious and cost-effective manner in which to incorporate it into practice are not broadly understood by NPs in this setting.

ACCREDITATION: This activity was approved for 1.0 contact hour of continuing education (which includes 1.0 hour of pharmacology) by AANP.

SUPPORT: This Activity was Supported by an Educational Grant from Abbott Diabetes Care, Inc.

LEARNING OBJECTIVES:

- Compare and contrast available continuous glucose monitoring systems.
- Identify core metrics to assess continuous glucose monitoring data and outline their applicability in patients.
- Explain the focus on time in range (TIR) as a key metric.
- Evaluate costs and cost effectiveness of continuous glucose monitoring and established methods of self-monitoring of blood glucose.

AANP ACTIVITY OUTCOMES OVERVIEW

LEARNER PARTICIPATION

N=2346

UNIQUE LEARNERS

NP	Nurse/NP student	Other APRN	Other
87% (2052)	10% (226)	2% (42)	1% (26)

NP CERTIFICATION

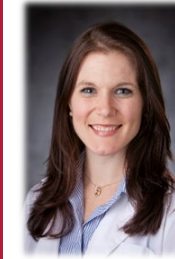
Family	Adult/ Gerontology	Acute Care	Other	Not certified as NP or NP student
74% (1734)	16% (379)	2% (51)	2% (45)	6% (137)

PRACTICE SETTING

Primary Care	Acute/Urgent Care	Internal Medicine	Endocrinology
53% (1230)	9% (221)	7% (161)	8% (184)

*Additional practice sites: Women's health, addiction medicine, palliative care, community care, pain management

FACULTY



Dr. Kathryn Evans Kreider,
DNP, FNP-BC, BC-ADM

Kathryn Evans Kreider, DNP, FNP-BC, BC-ADM is an Associate Clinical Professor at Duke University School of Nursing and nurse practitioner in adult endocrinology at Duke University Medical Center. Dr. Kreider is the founder and lead faculty of the first endocrinology specialty training program for NPs in the world. She is a nationally recognized expert in advanced diabetes management. Dr. Kreider is a co-author of the 2019 and 2020 Standards of Medical Care in Diabetes, the internationally renowned clinical guidelines published by the American Diabetes Association. She is a well-published author and national speaker on topics in diabetes and endocrinology.

IMPACT

Post Activity Knowledge Gains
31%
(2346 unpaired)
Overall increase in mean percent correct answers from pre to post, $p < 0.001$

7,194
of potential patients impacted weekly from this CE activity