

Introduction

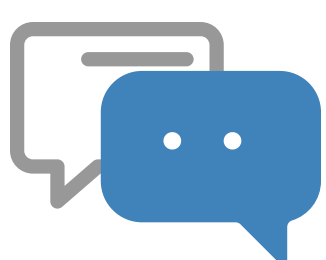
As AI rapidly evolves across the health care landscape, the American Association of Nurse Practitioners® (AANP) is committed to helping NPs integrate AI and other assistive technologies into their practice. This handout summarizes findings from two focus groups in June 2025 that explored AANP members' perspectives and early experiences with AI.

What benefits do NPs and students see in using AI?



AI can save time and improve accuracy by taking over documentation.

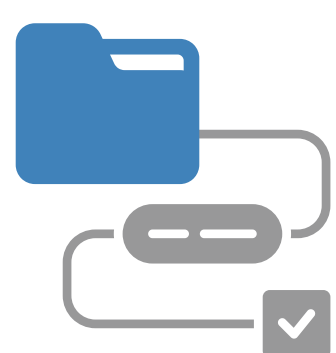
- Practicing NPs said AI-generated notes are more detailed and individualized than the cookie-cutter manual templates in electronic health records.
- Students see value in AI tools that customize documentation templates for different visit types.
- Practicing NPs and students appreciate that AI documentation aids (like ambient transcription) allow providers to give patients more undivided attention during visits.
- They also see AI-assisted charting as a way to reduce end-of-day chart backlog and burnout.



AI translation tools help NPs communicate with patients who use other languages.

- NPs value the ability to customize translations and offer handouts geared to patients with different comprehension levels when using AI translation.

How would NPs and students like to use AI in the future?



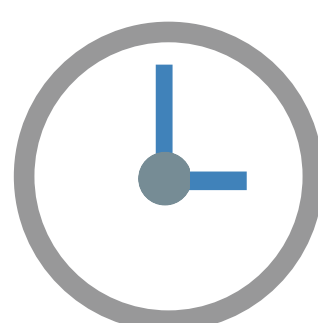
NPs and students envision AI tools that could analyze chart data or review a patient's electronic health record.

- AI could look for patterns over time that are harder for providers to pick up on, such as subtle trends in lab results, or patient history over decades of records.



NPs and students hope AI will help them identify additional diagnostic options and support clinical reasoning.

- For example, AI could integrate multiple data sources such as images, labs and symptoms to augment differential diagnosis possibilities.



NPs and students see potential benefits from using AI to navigate and integrate evidence-based guidelines more efficiently and thoroughly.

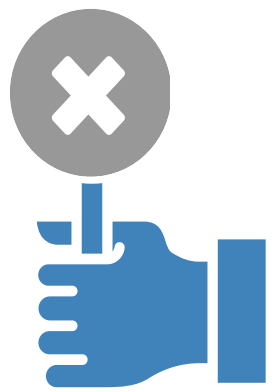
- This could save time and improve accuracy by reducing the need for providers to click through decision trees and literature manually or rely only on memory.
- They would also like AI to auto-calculate values from scanned documents like lab results so providers don't need to manually enter the data.

What concerns do NPs and students have with using AI?



Patient privacy, consent and trust:

- NPs and students emphasized the need for strict safeguards around patient consent and confidentiality. Ensuring that AI tools comply with HIPAA and securely handle sensitive patient information is critical.
- In sensitive fields like mental health and addiction treatment, patients and providers are hesitant and sometimes unwilling to consent to any recording or AI involvement.
- Patients in some cultural groups have relatively low degrees of AI acceptance and trust. To build trust, NPs and students suggested framing AI as a tool that helps them improve care and allows them to spend more time with patients than on paperwork.



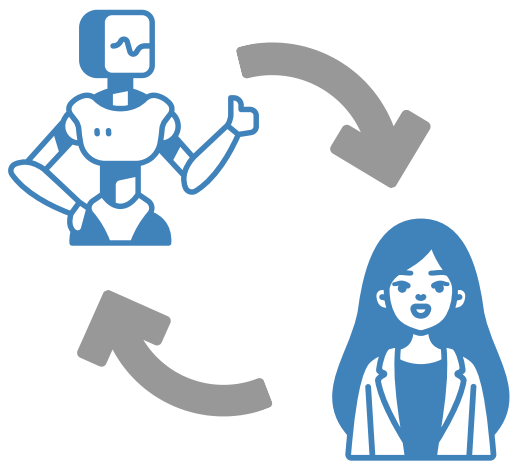
Reliability, accuracy and liability:

- Although NPs value AI translation, they are concerned about accuracy and related liability.
- NPs and students know that AI can make mistakes, such as mishearing and even fabricating information, and that providers must verify AI output and suggestions. NPs must make the final decision on diagnoses and treatments.
- NPs also recognized that AI could reduce liability by making notes and plans more detailed.



Bias and disparities:

- NP students are concerned about algorithmic bias, where AI tools trained on non-diverse data perform poorly for underrepresented groups.
- Variation in AI adoption and acceptance across different settings can create disparities in both patient care and NP experience with AI.



Professional role and replacement concerns:

- NPs stressed that empathy, personal connection and understanding a patient's emotions cannot be delegated to a machine.
- NPs are concerned that AI could eventually replace human clinicians in certain aspects of care and that overreliance on AI may lead to skill atrophy.

Data source: 2025 AANP AI Focus Groups. AANP conducted one focus group with NPs and one with NP students at AANP's National Conference in San Diego in June 2025. The focus groups only included participants who registered for the AANP conference.